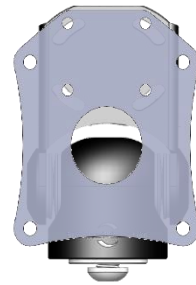


## Installation Instructions

Toyota Hilux (2021+)



VESA B

Step

Instructions

- 1** Remove 2 x screws as shown and loosen the speedometer surround panel.



**2**

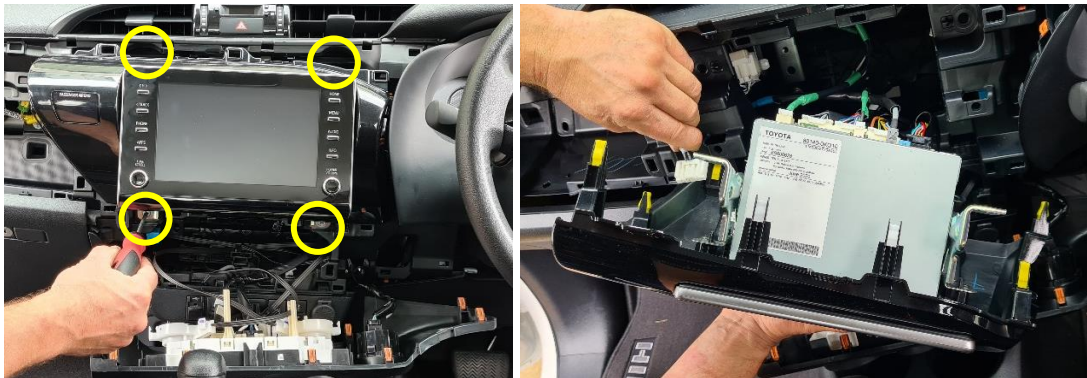
Loosen dash panel as shown.



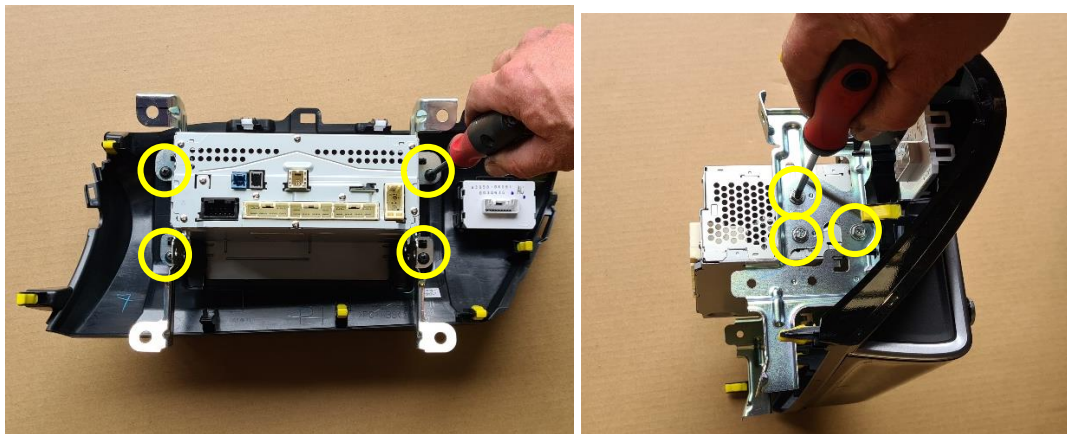
- 3 Remove upper glove box piece as shown.  
Then, loosen plastic trimming and gently lower the AC unit.



- 4 Remove 4 x screws as indicated.  
Loosen display unit, remove cables then set aside.



- 5 Remove 4 x screws on rear of display unit.  
Then remove 3 x screws on both left and right sides of the unit.





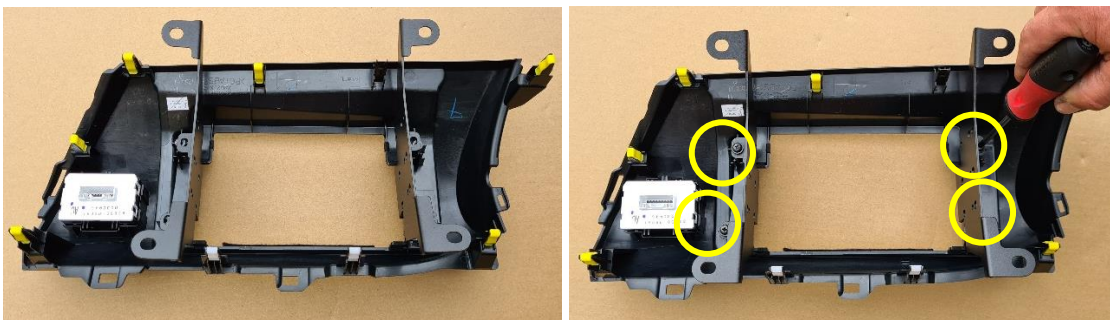
- 6 Remove metal side pieces, then slide plastic cover away from display unit.



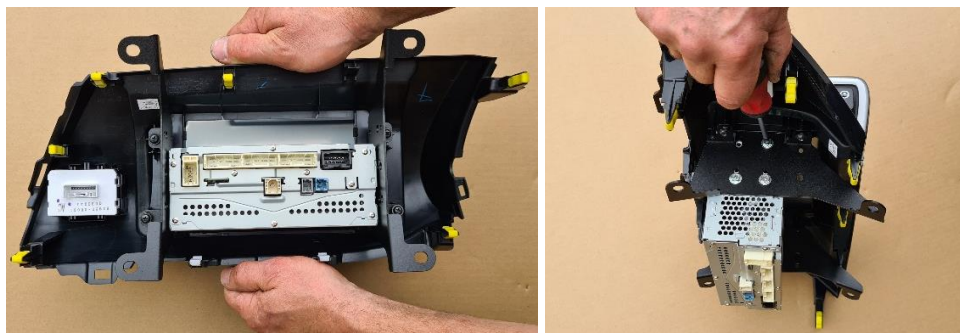
- 7 Remove sticker on inside edge of plastic as shown.  
Using a sharp blade carefully trim away 3 x ribs. Repeat both steps for the other side.



- 8 Place pair of side brackets as shown, loosely fix with 4 x screws.

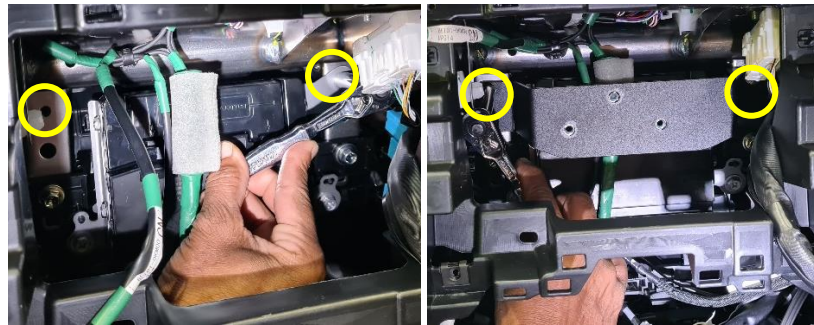


- 9 Place plastic cover back around display unit. Then, replace 6 x side screws.



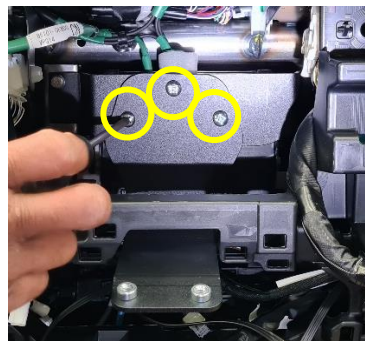
7

Install bracket with 2 x M6 screws provided



8

Install second bracket with 3 x M6 screws provided



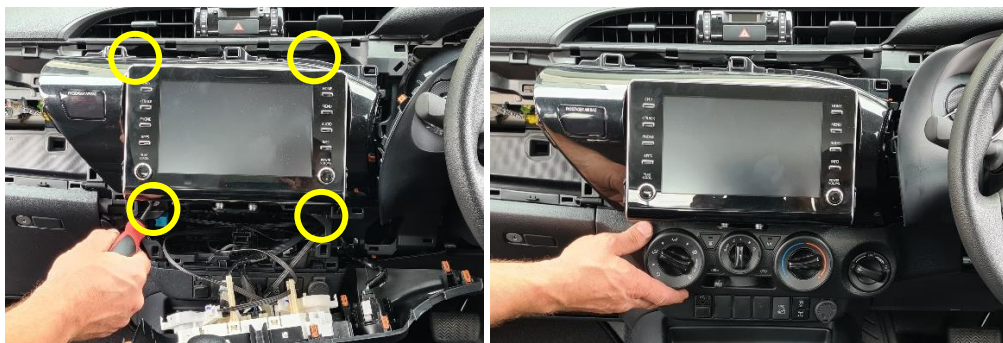
9

Replace all previously removed plugs and reinstall display unit into the dash.



10

Replace 4 x screws around display, then place AC unit back to original position.





11

Replace remaining dash pieces to their original state.



12

Install front bracket using 4 x mounting locations.



12

Enjoy your new InDash Mount!



If you have any issues or questions, please contact us.  
**Industrial Evolution**