




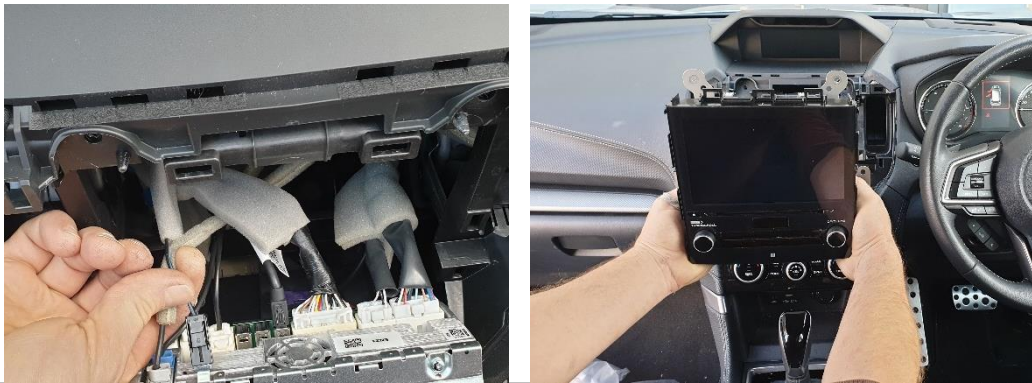
Installation Instructions

Subaru Forester (2019+) In Dash Mount

Step	Instructions
1	<p>Lever and remove A/C vents.</p> 
2	<p>Lever and remove plastic surrounds above digital display.</p> 
3	<p>Remove 4x screws.</p> 

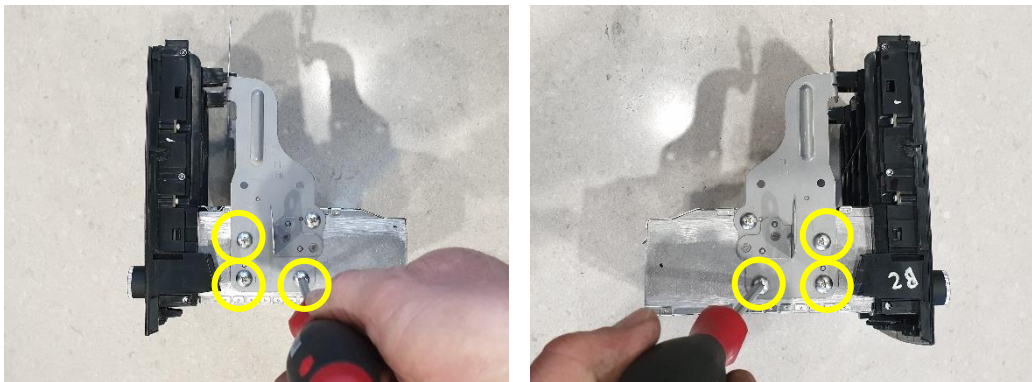
4

Unplug and remove digital display.



5

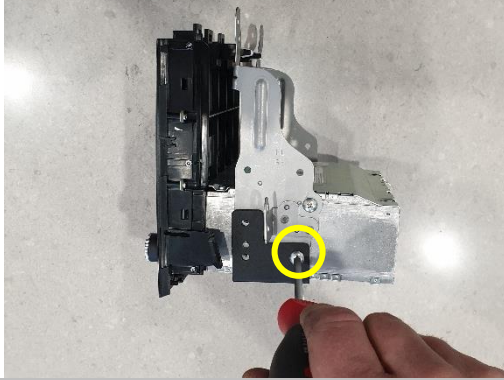
Remove 3x screws from each side of digital display unit.



6

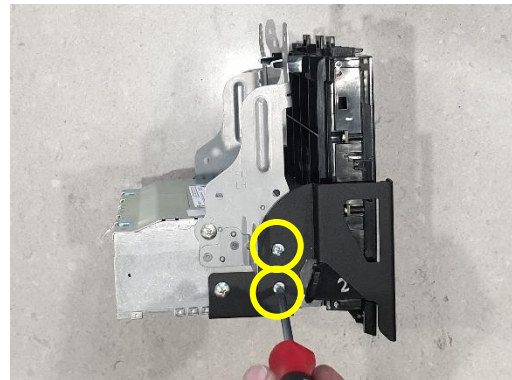
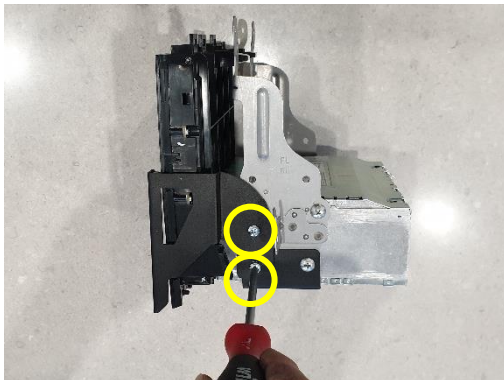
Install lower bracket using 1x screw from each side, as pictured.





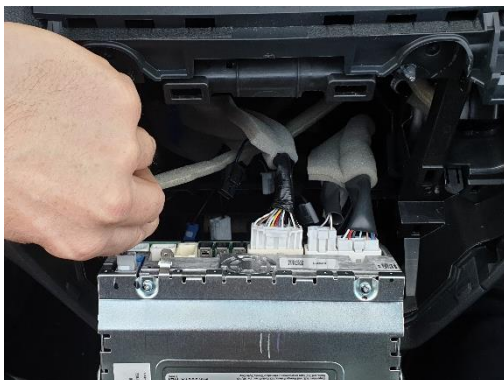
7

Install L + R side brackets using remaining 2x screws from each side.



8

Plug in and replace digital display.



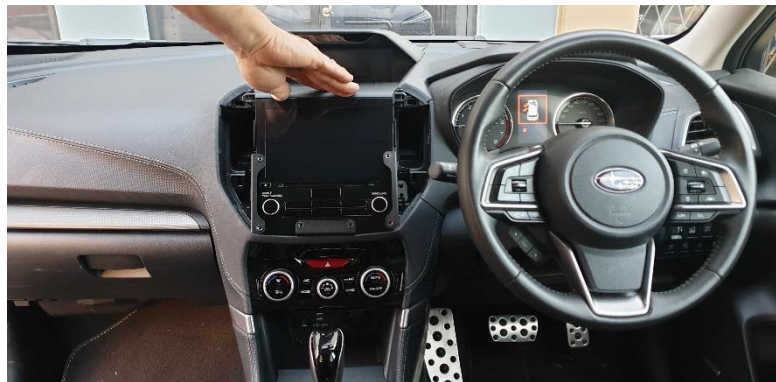
9

Replace 4x screw removed in Step 3.



10

Replace upper plastic surrounds.



11

Replace A/C vents.



12

Install front bracket using 6x countersunk screws provided.



If you have any issues or questions, please contact us.
Industrial Evolution