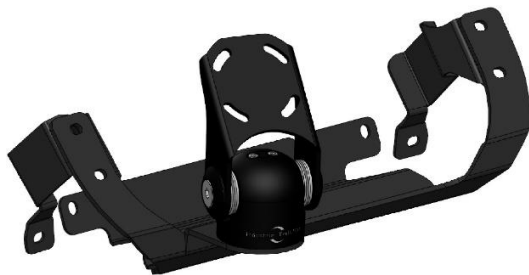


Installation Instructions

LandCruiser 300 GR Sport VX (2022+) Install Instructions



Step	Instructions
------	--------------

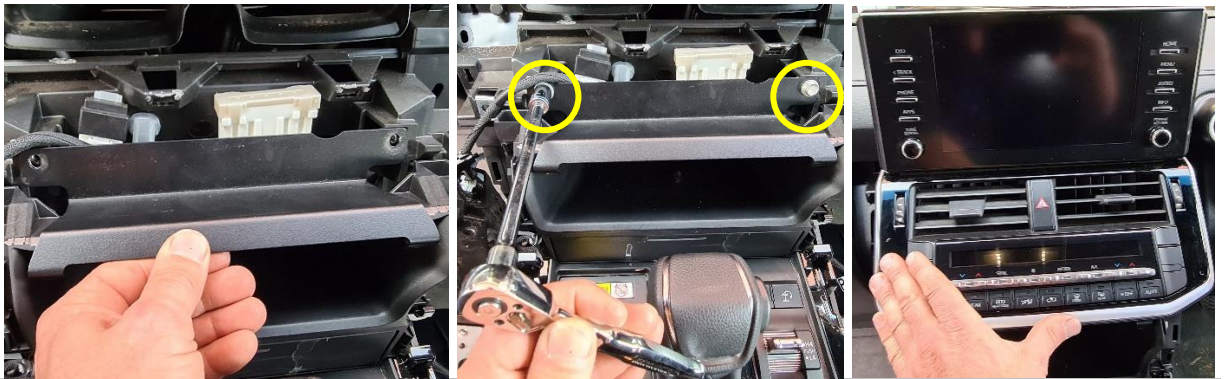
- 1** Loosen and set aside lower dash components on both sides as shown.
 Remove 1 x screw per side, then remove central dash piece



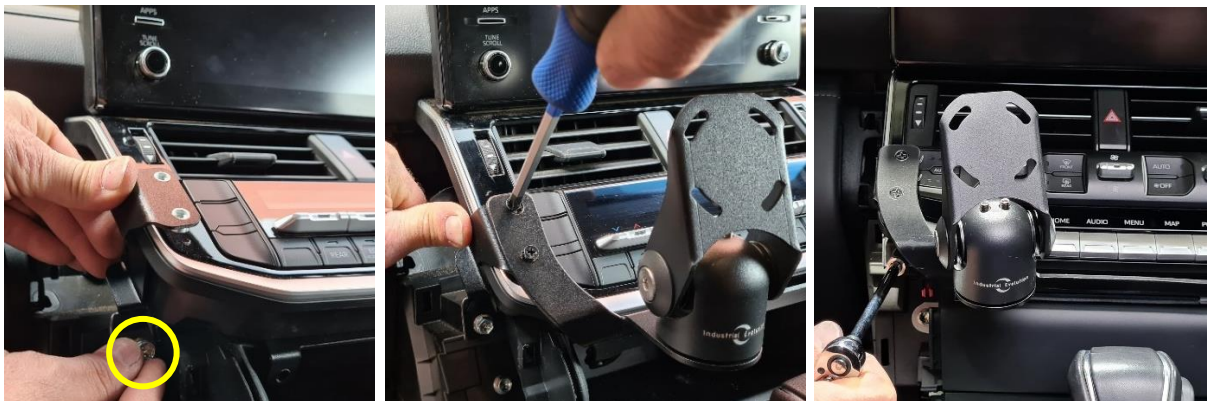
- 2** Remove 2 x indicated screws.
 Install lower bracket using 2 x mounting points, then return central dash component as shown.



- 3 Install lower bracket using 2 x mounting points, then return central dash component as shown.



- 4 Install 2 x side brackets using indicated mounting point, do not fully tighten fixing.
Then install front dash bracket using 6 x provided screws. Return to fully tighten 2 x fixings.



- 5 Return all remaining dash components to their original state.



6

Enjoy your Dash Mount!



If you have any issues or questions, please contact us.
Industrial Evolution