

## Installation Instructions

Kia Carnival (2021+)



Step

Instructions

1

Loosen plastic covering behind screen console.  
Remove exposed screws.



2

Loosen and remove plastic as indicated.



- 3 Remove 4 x screws indicated and cables from display unit, then set aside.

Remove 3 x screws.



- 4 Lift forward plastic dash piece and install first bracket as indicated, fixing in place with 4 x screws.



- 5 Trim internal tab off plastic dash piece as shown. Replace 1 x screw loosely, can't be too tight.

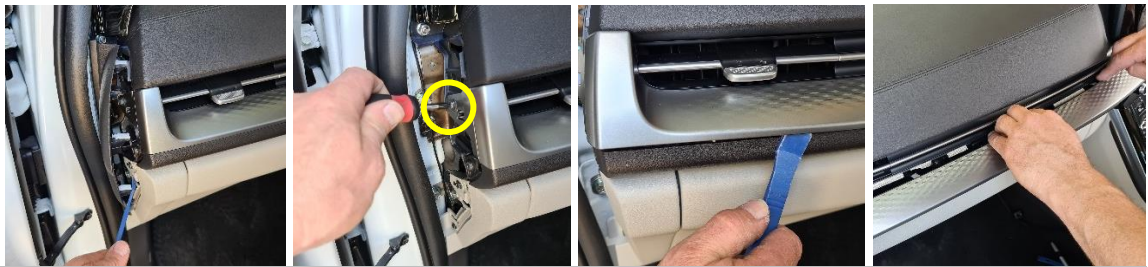


- 6 Restore all previously removed screws, cables and dash components to their original state.





- 7 Loosen passenger side panel and 1 x screw. Then loosen and remove silver dash piece.



- 8 Remove 4 x screws. Then loosen indicated panel and remove 1 x screw.



- 9 Loosen control panel, then remove 2 x screws.



- 10 Install the second bracket using 2 x previously removed screws.



- 11 Restore all previously removed screws and dash components to their original state.



- 13 Install front dash bracket using 4 x provided screws.



Enjoy your new In Dash Mount!

If you have any issues or questions, please contact us.

**Industrial Evolution.**