

Installation Instructions

Isuzu MUX (2021+)



STEP	INSTRUCTION
------	-------------

1

Lever and lift plastic trimming, as pictured.



2

Carefully loosen, then remove, the display unit. Plastic clips may break due to Isuzu design when removing front panel.

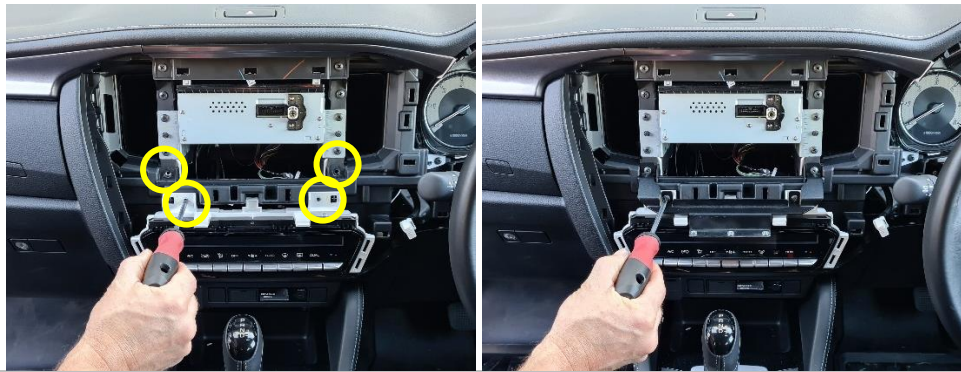


3

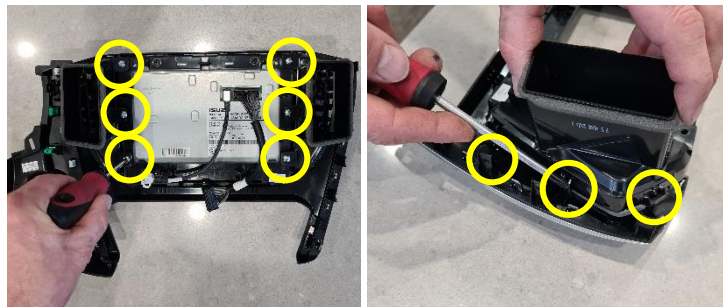
Unplug rear cables and set display unit aside.



- 4 Remove 4 x screws. Install first bracket using 4 x screws.



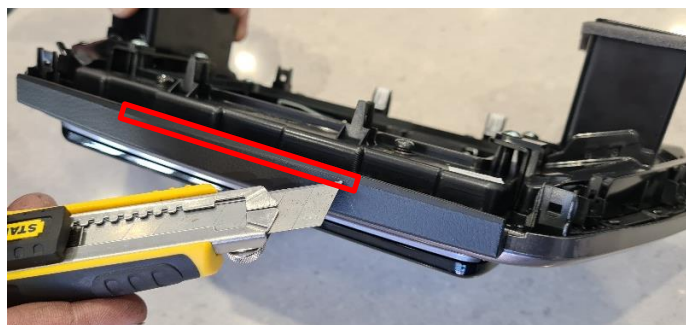
- 5 Remove 6 x screws on rear of display unit. Then remove 2 x vents, pressing down clips as shown.



- 6 Install 2 x side brackets under the vents, then return 6 x screws



- 7 Using a sharp blade, carefully trim 2mm of plastic underside of the dash unit as indicated.



- 8 Return display unit to the dash, then restore speedometer surround. Install bracket, using 3 x fixings underneath. There will be a small gap between the plastic and metal components.



- 9 Install front dash bracket using 6 x provided screws.



Enjoy your new InDash Mount!

If you have any issues or questions, please contact us.