

## Installation Instructions

### Isuzu D-Max (2021+)



STEP

INSTRUCTION

1

Carefully loosen, then remove, the display unit.



2

Unplug display unit.



- 3 Remove plastic clips from the dash as shown.  
Then, attach them to prongs on the rear of the display unit



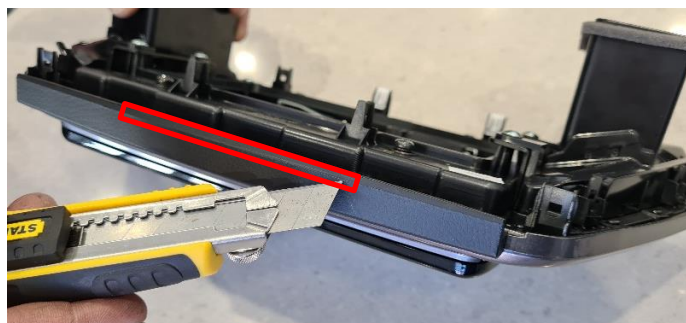
- 4 Remove 6 x screws on rear of display unit.  
Then remove 2 x vents as shown.



- 5 Secure L + R brackets as shown, and fix into place by reattaching vents and screws removed in previous step.



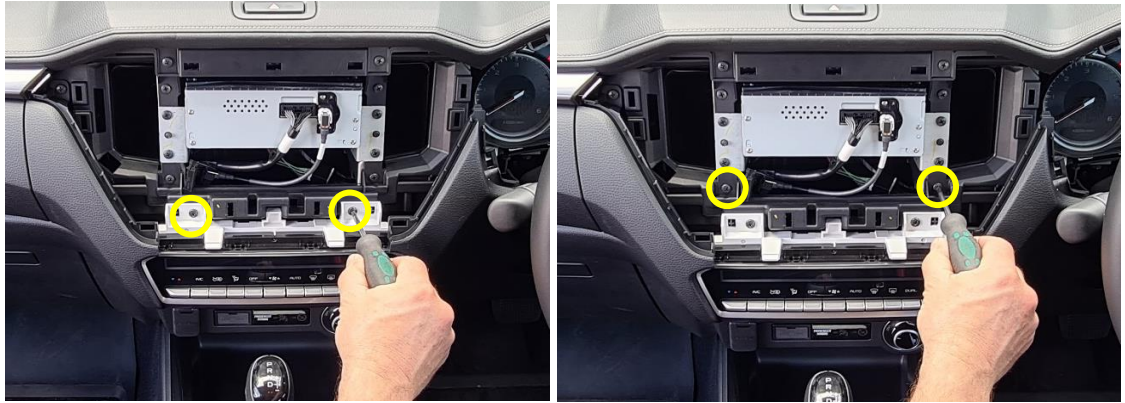
- 6 Using a sharp blade, carefully trim 2mm of plastic underside of the dash unit as indicated.





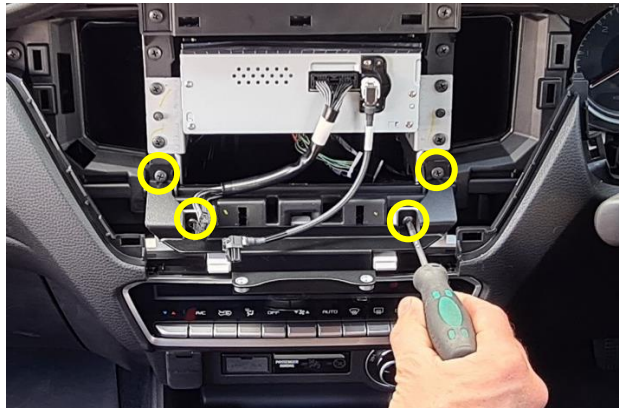
7

Remove 4 x screws from dash as shown.



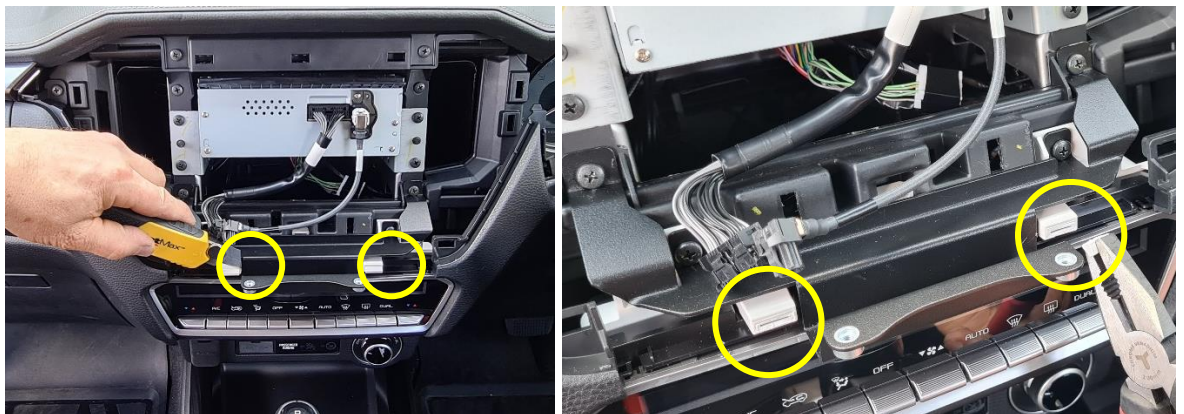
8

Install bracket as shown, securing with previously removed 4 x screws.



9

Using a sharp blade, carefully trim 2 x plastic extrusions as shown.



10

Return all components to their original locations.



11

Install 2 x supplied screws into upper corner of air vents as shown.



12

Enjoy your new InDash Mount!



If you have any issues or questions, please contact us.